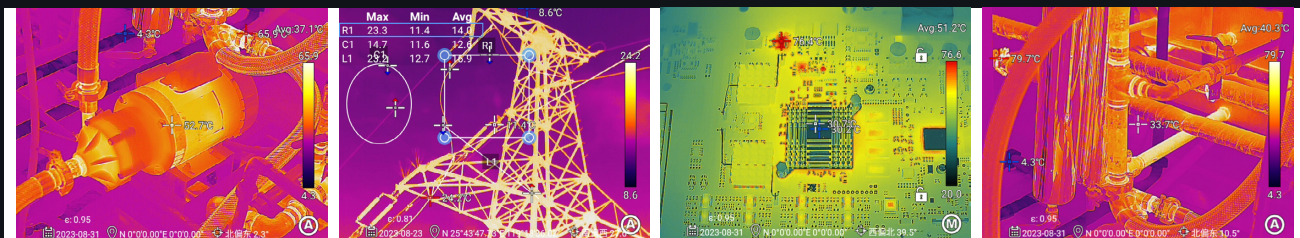


UTi384J/UTi640J

Professional Enhanced Thermal Camera



Featuring a built-in high-sensitivity infrared detector up to 640×480 pixels, and a 13MP digital camera. The high-precision thermal camera designed specifically for the industrial field helps users intuitively view the hidden thermal abnormalities. 30Hz infrared frame rate for fast and accurate access to more temperature data of moving targets. Auto focus is also supported, fearless of the distance.



Electrical Equipment

Power Tower

PCB R&D

Pipeline inspection

Specifications

Model	UTi384J	UTi640J
Technical Data		
Display	4.3" LCD Touch (800x480)	
IR resolution (Pixels)	384x288	640x480
Super resolution	√(768x576)	√(1280x960)
Frame rate	30Hz / 9Hz	
Thermal sensitivity(NETD)	≤40mK	
Focus	Manual / Automatic / Touch autofocus / Continuous autofocus	
Temperature measurement range	Support auto-switching: -40°C~150°C, 0°C~650°C 500°C~2000°C (Optional Hi-temp. Lens)	
Accuracy	±2°C or ±2% whichever is greater	
Functions		
On screen analyzer	10 Points/10 Lines/10 Rectangles/10 Circles	16 Points/16 Lines/16 Rectangles/16 Circles
HI/LO temperature alarm	LCD animation, LED flashlight, Buzzer	
HI/LO temperature tracking	√	
Digital camera resolution	8MP	13MP
Digital zoom	1.1x~10x	1.1x~20x
Video/voice recording	√	
Wi-Fi/Bluetooth	√	
Analysis software	PC+APP	
General Characteristics		
Battery	3030mAh detachable Li-ion battery pack × 2	
Operating time	≥5 hours (with Wi-Fi off)	≥4 hours (with Wi-Fi off)
USB	Type-C	
Storage	64GB Internal & 64GB Micro SD card	
Image storage format	JPG with temp. data	
Video storage format	MP4 & Irgd	
Protection	IP54 & 2m drop proof	
Languages	ZH, TC, EN, FR, DE, ES, IT, RU, PL, KR, PT, TR, TH, NO, CZ, HU, JP, AR	

Interchangeable Lens

UTi384J



UTi640J



UNI-T
UNI-TREND TECHNOLOGY

unitrend88
 UniTrendTechnology
 uni-trend-technology-china-limited